

# Stevedoring and Ports

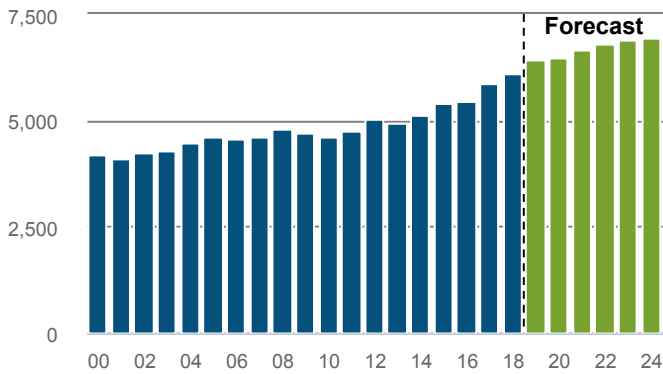
## NEW ZEALAND

How many people worked in the sector in 2018?

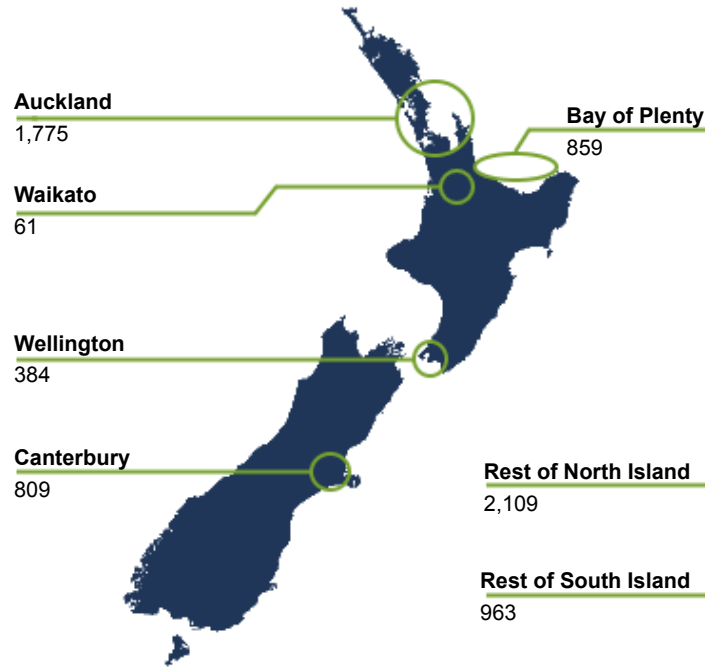
### 6,101 filled jobs

0.2% of 2,494,515 in New Zealand

CHANGE P.A	2013-2018	2018-2024
Stevedoring and Ports	4.4%	2.1%
Total New Zealand	2.5%	1.8%



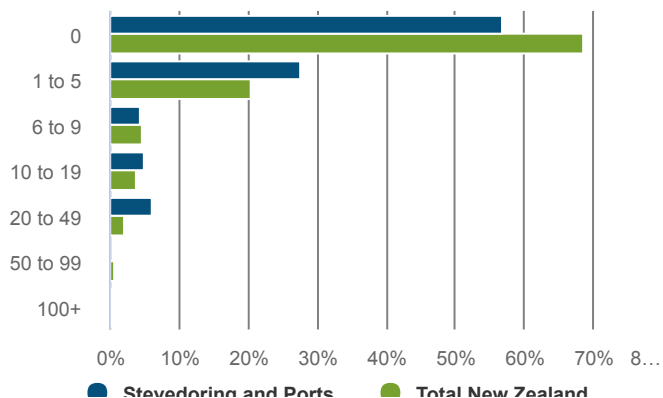
Where did people work in 2018?



How many businesses were in the sector in 2018?

### 429 business units

0.08% of 569,907 in New Zealand



What were the top 5 occupations in 2018?

### 2,861: top 5 occupations

47% of total Stevedoring and Ports in New Zealand

OCCUPATION	LEVEL 2018	CHANGE 13-18 18-24 (F)	
Waterside Worker	2,238	5.6%	-1.6%
Labourers nec	203	6.4%	-2.5%
Despatching and Receiving Clerk	147	0.2%	-0.9%
Forklift Driver	141	5.1%	-2.0%
Crane, Hoist or Lift Operator	132	5.7%	-1.6%

How many people are likely to be in new roles in the sector between now and 2024?

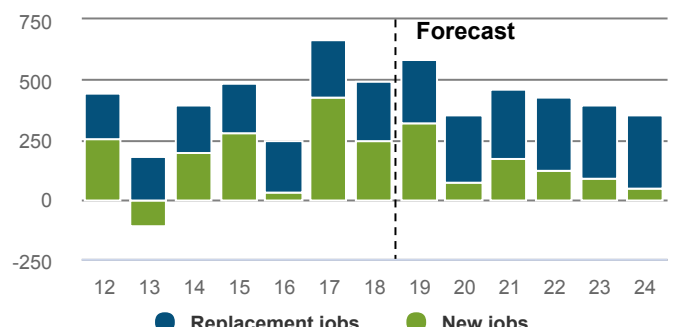
### 3,074 Total job openings

Total New Zealand: 1,138,017

Total job openings (2018-2024) consists of:

- New jobs: 1,069
- Net Replacement job openings: 2,005

New job openings come from growth in total employment. Replacement job openings estimate individuals leaving an occupation (eg, retirement), net of individuals entering an occupation (eg, returning from parental leave).



# Stevedoring and Ports

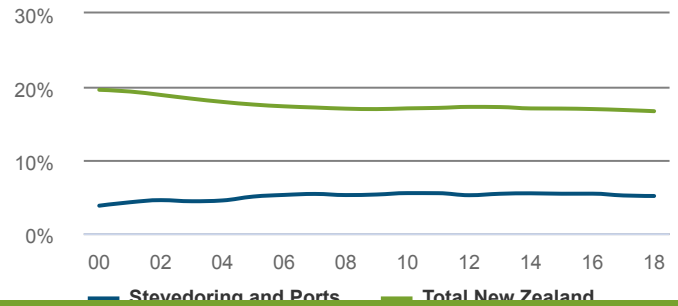
## NEW ZEALAND

How many people were self-employed in 2018?

### 310 Self-employed

Workers in the Stevedoring and Ports are less likely to be self-employed than workers in New Zealand as a whole.

**5.1% self-employment rate**  
**Total New Zealand: 17%**



How productive was the sector in 2018?

### \$761m GDP

**0.3% of New Zealand GDP**

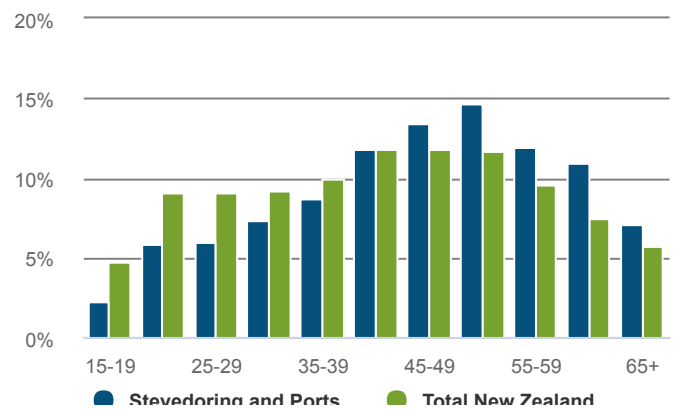
CHANGE P.A	2013-2018	2008-2018
<b>Stevedoring and Ports</b>	<b>7.0%</b>	<b>4.7%</b>
Total New Zealand	3.3%	2.1%

### \$132,920 GDP/FTE

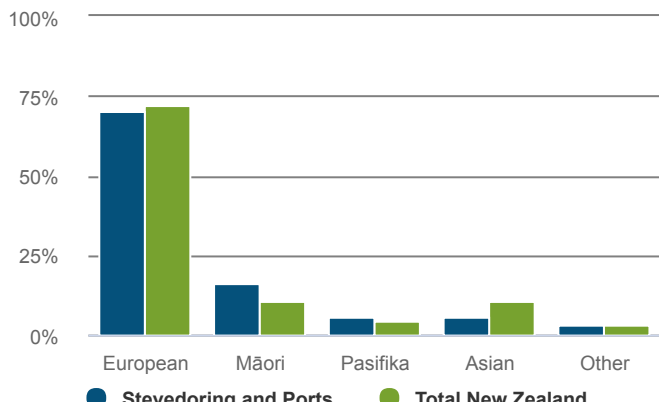
**Total New Zealand: \$107,400**

**2.2% P.A. change from 2013-2018.**  
**Total New Zealand: 0.4%.**

What was the age profile of workers in 2013?



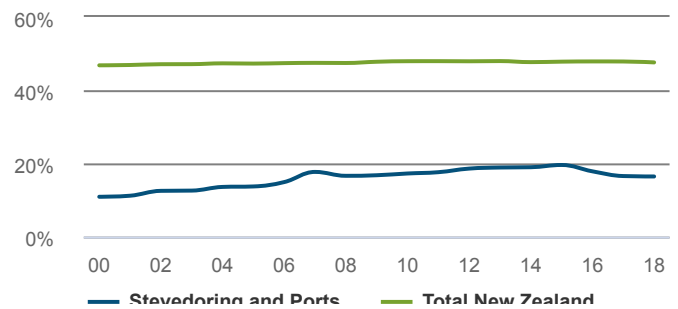
What was the ethnicity of workers in 2013?



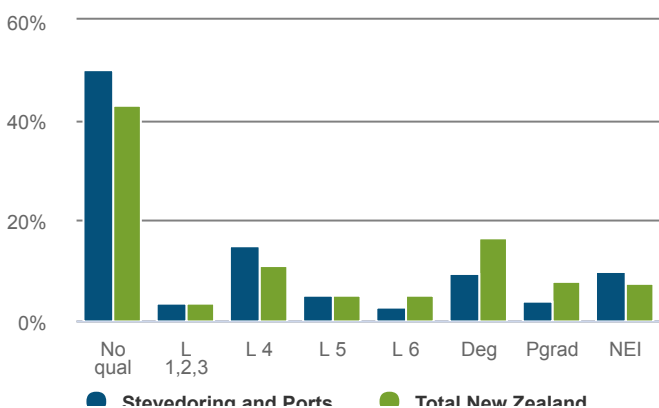
How many workers were female in 2018?

### 16% female

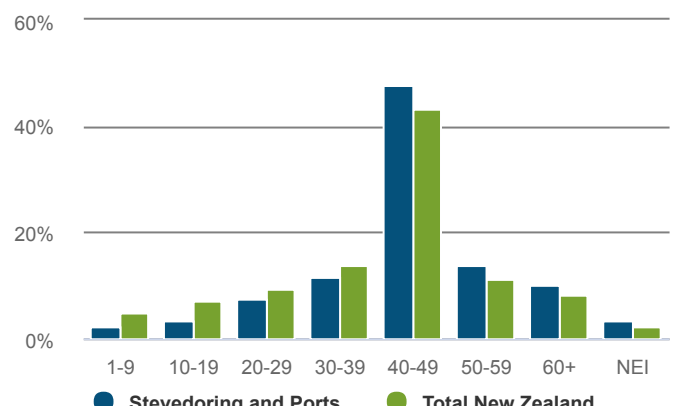
**Total New Zealand: 48%**



What were the workers highest quals in 2013?



How many hours were spent working in 2013?



Data source: Infometrics and Statistics New Zealand - This report relates specifically to the sector as defined by the client